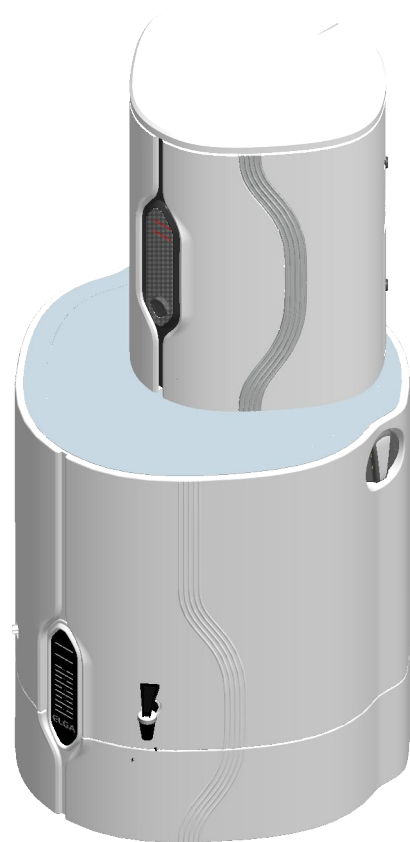
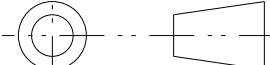


ISS	MN/PRN/DN	ACTION	APPROVED	DATE
1	DN/E/0157	PMN	MDN	JUL 14



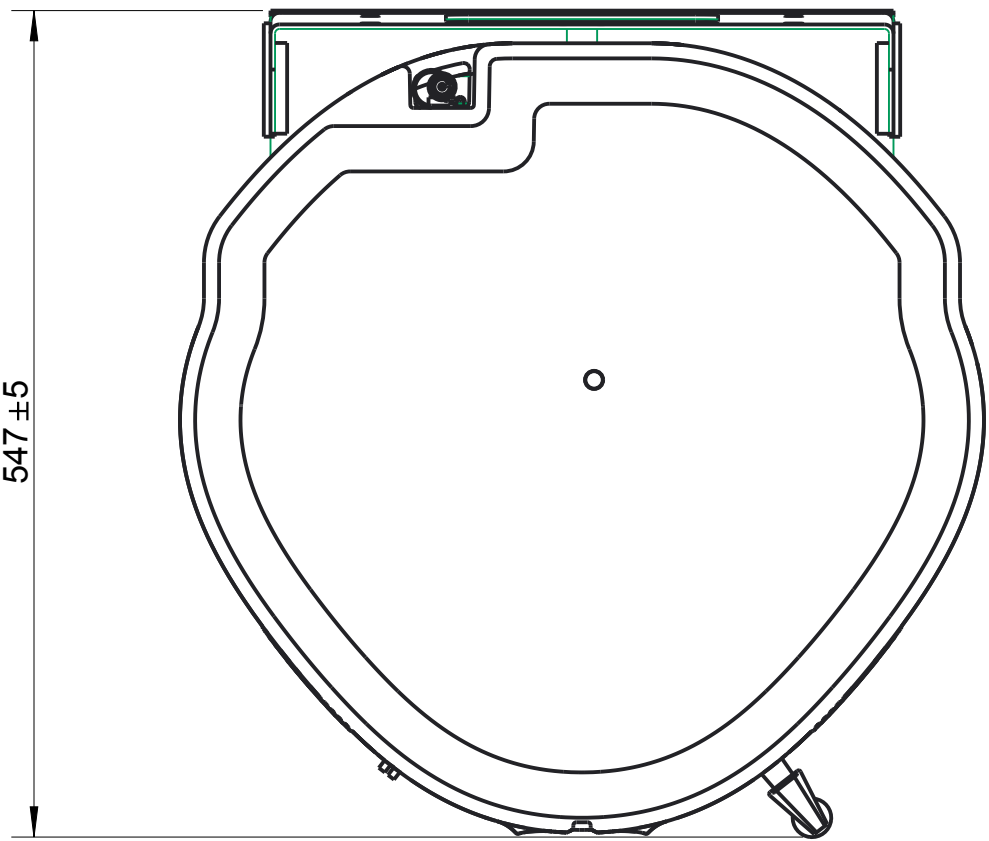
SCALE 0.100

THIS DRAWING HAS BEEN CREATED USING PRO-ENGINEER SOFTWARE. THE MASTER FILE IS STORED IN THE R&D PRO-ENGINEER PART/ASSEMBLY DIRECTORY, HELD ON THE NETWORK.

IF IN DOUBT - ASK				
				
3rd ANGLE PROJECTION DO NOT SCALE				
MATERIAL: --				
FINISH: --				
GENERAL NOTE: REMOVE ALL BURRS & SHARP EDGES				
STATUS: Released				
TOLERANCES UNLESS STATED: DIMS. ± 1.0 ANGULAR ± 0.5°				
DIMS. IN	SCALE	DRAWN	PMN	29/07/2014
mm	0.200	CHECKED	MDN	31/07/2014
		APPROVED	LUD	31/07/2014
TITLE: SALES DIAGRAM 60L RESEVOIR INTERGRATED OUTLINE AND CONNECTION DETAILS				
PART NUMBER: SD_CHORUS_6				
ELGA ELGA LABWATER GLOBAL OPERATIONS Lane End Industrial Park Tel +44 (0) 1494 887 500 High Wycombe Fax +44 (0) 1494 887 505 Bucks, HP14 3BY, UK service@elgalabwater.com ELGA LabWater is a brand name of VWS (UK) Ltd				
DRG. NO: SD_CHORUS_6				ISSUE
SHEET No. 1 OF 2				1

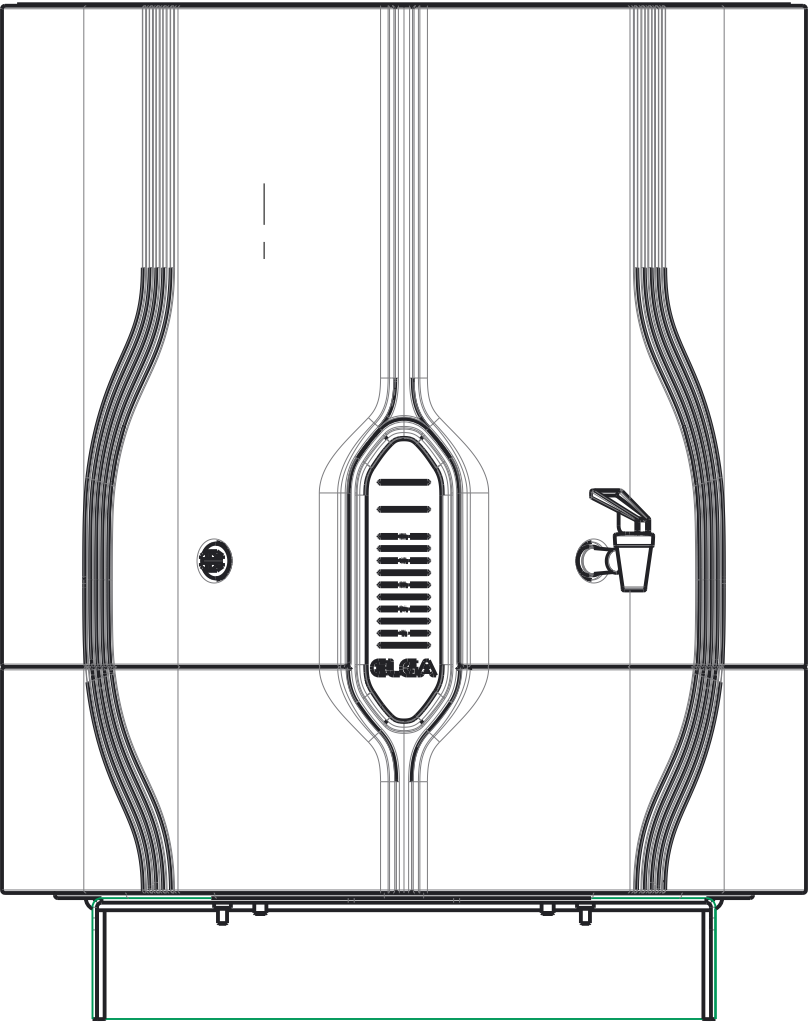
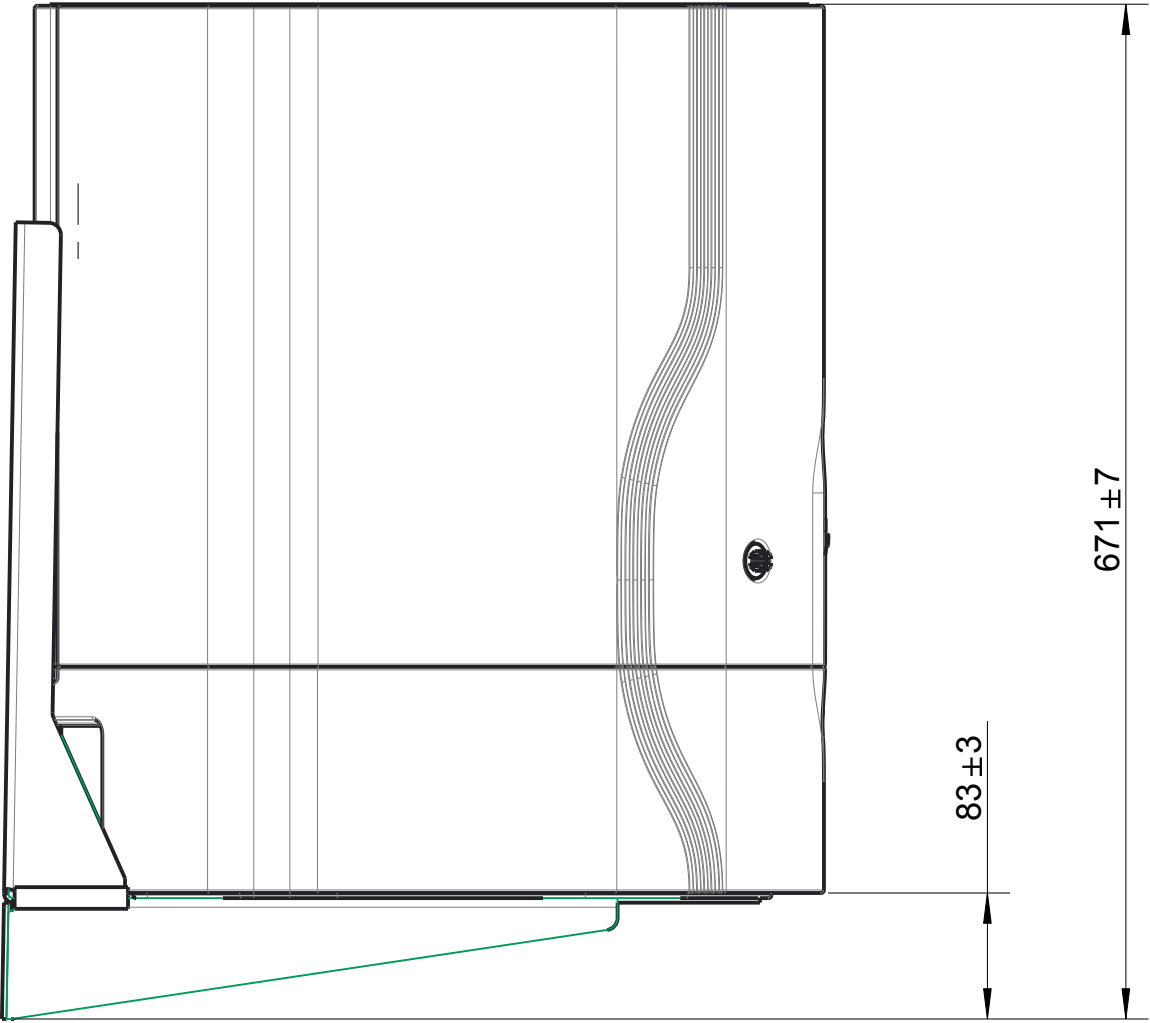
ELECTRICAL		CONNECTIONS		
MAINS INPUT	100-240Vac 50-60Hz	PORT 1	WATER INLET	8MM (5/16") OUTSIDE TUBE DIAMETER
SYSTEM VOLTAGE	24Vdc	PORT 2	MANUAL BYPASS	8MM (5/16") OUTSIDE TUBE DIAMETER
POWER CONSUMPTION (PEAK)	60VA (PER MODULE)	PORT 3	DRAIN OUTLET	8MM (5/16") OUTSIDE TUBE DIAMETER
(Operational) WEIGHT		PORT 4	PURIFIED WATER OUTLET	8MM (5/16") OUTSIDE TUBE DIAMETER
CHORUS 1, 2 ,3	20Kg (44Lb)	PORT 5	RETURN WATER	8MM (5/16") OUTSIDE TUBE DIAMETER
CHORUS INTEGRATED	70Kg (154Lb)	PORT 6	ELECTRICAL POWER INLET	ELECTRICAL CONNECTIONS. ONLY USE ELGA APPROVED POWER AND NETWORK LEADS.
CHORUS INTEGRATED	90Kg (198Lb)	PORT 7	NETWORK CONNECTION	
		PORT 8	ELECTRICAL POWER LINK	
		PORT 9	NETWORK CONNECTION	

THIS DRAWING IS THE PROPERTY OF ELGA LabWater. THE DETAILS SHOWN ARE STRICTLY CONFIDENTIAL AND MUST NOT BE DISCLOSED TO ANY THIRD PARTY WITHOUT THE CONSENT OF VWS (UK) LTD.

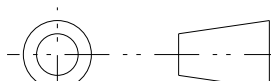


SCALE 0.150

THIS DRAWING HAS BEEN CREATED USING PRO-ENGINEER SOFTWARE. THE MASTER FILE IS STORED IN THE R&D PRO-ENGINEER PART/ASSEMBLY DIRECTORY, HELD ON THE NETWORK.



WALL MOUNTED OPTION

IF IN DOUBT - ASK					
<div><div></div></div>					
3rd ANGLE PROJECTION DO NOT SCALE					
MATERIAL: --					
--					
FINISH: --					
--					
GENERAL REMOVE ALL BURRS NOTE: & SHARP EDGES					
STATUS:					
Released					
TOLERANCES UNLESS STATED:					
ONE PLACE DEC. \pm 0.1			ANGULAR \pm 0.5°		
TWO PLACE DEC. \pm 0.01			ALL HOLE TOLS. TO BS.4500 H11		
DIMS. IN	SCALE	DRAWN	PMN	29/07/2014	DATE
mm	0.200	CHECKED	MDN	31/07/2014	
		APPROVED	LUD	31/07/2014	
TITLE:					
SALES DIAGRAM					
60L RESEVOIR INTERGRATED					
OUTLINE AND CONNECTION					
DETAILS					
PART NUMBER: SD_CHORUS_6					
<div><div>ELGA</div><div>ELGA LABWATER GLOBAL OPERATIONS Lane End Industrial Park Tel +44 (0) 1494 887 500 High Wycombe Fax +44 (0) 1494 887 505 Bucks, HP14 3BY, UK service@elgalabwater.com ELGA LabWater is a brand name of VWS (UK) Ltd</div></div>					
DRG. NO: SD_CHORUS_6					ISSUE
SHEET No. 2 OF 2					1

THIS DRAWING IS THE PROPERTY OF ELGA LabWater. THE DETAILS SHOWN ARE STRICTLY CONFIDENTIAL AND MUST NOT BE DISCLOSED TO ANY THIRD PARTY WITHOUT THE CONSENT OF VWS (UK) LTD.