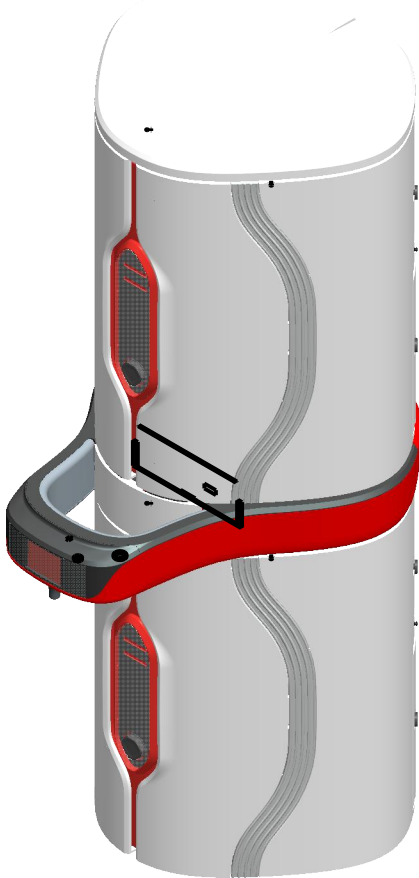
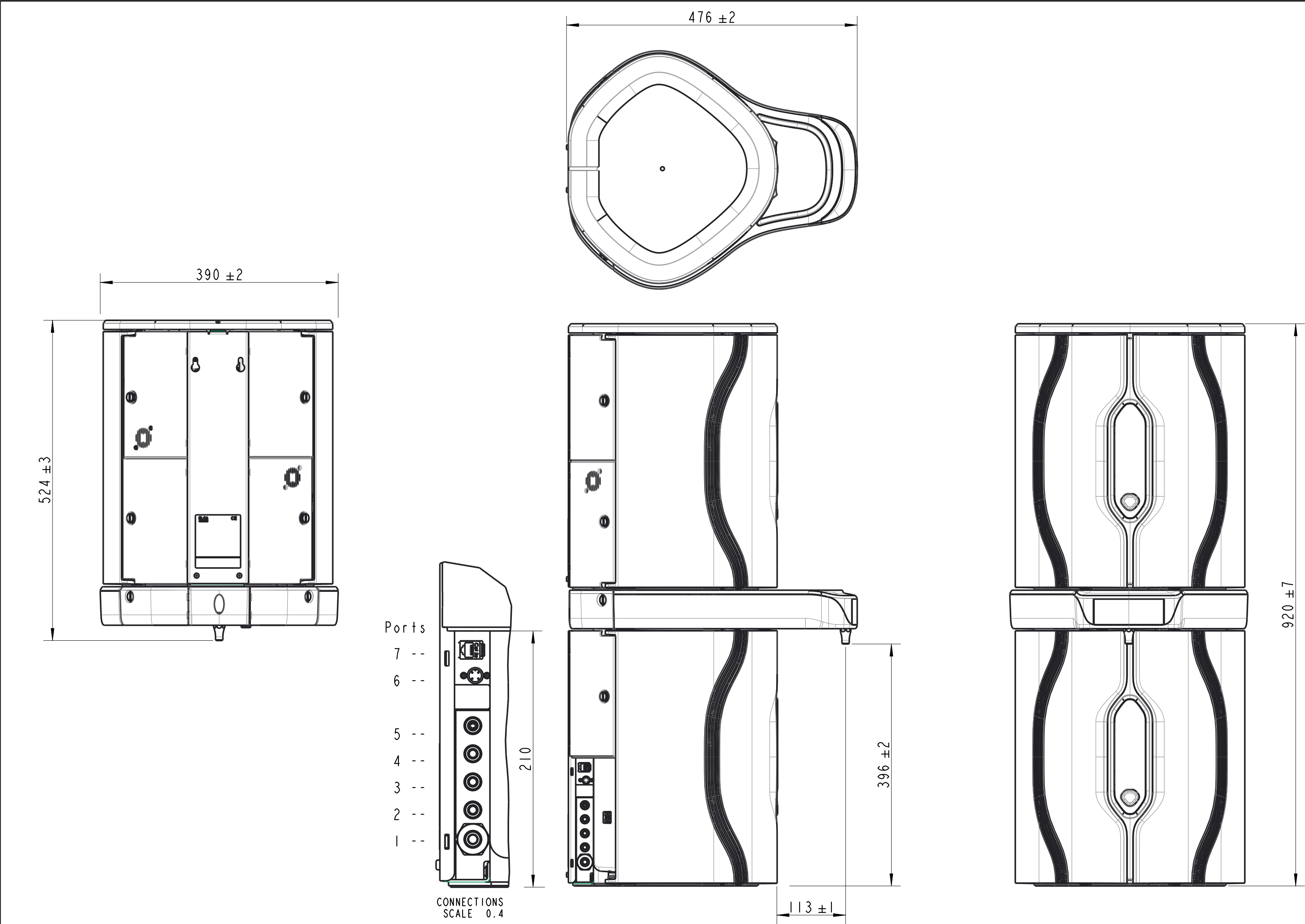


ISS	MN/PRN/DN	ACTION	APPROVED	DATE
1	DN/E/153	MDN	LU	JUN 14



THIS DRAWING ~~HAS BEEN CREATED~~ ^{SCALE 1:25} USING PRO-ENGINEER SOFTWARE.
THE MASTER FILE IS STORED IN
THE R&D PRO-ENGINEER PART/ASSEMBLY
DIRECTORY, HELD ON THE NETWORK.

IF IN DOUBT - ASK				
3rd ANGLE PROJECTION DO NOT SCALE				
MATERIAL: --				
FINISH: --				
GENERAL NOTE: REMOVE ALL BURRS & SHARP EDGES				
STATUS: Released				
TOLERANCES UNLESS STATED: DIMS. ± 10 ANGULAR ± 10°				
DIMS. IN	SCALE	DRAWN	MDN	11/06/2014
mm	0.200	CHECKED	DSS	11/06/2014
		APPROVED	LUD	11/06/2014
DATE				
TITLE: SALES DIAGRAM HALO DISPENSER INTEGRATED OUTLINE AND CONNECTION DETAILS				
PART NUMBER: SD.CHORUS.3				
ELGA ELGA LABWATER GLOBAL OPERATIONS Lane End Industrial Park High Wycombe Bucks, HP14 3BY, UK ELGA LabWater is a brand name of VWS (UK) Ltd				
ELGA LabWater is a brand name of VWS (UK) Ltd				
DRG. NO: SD.CHORUS.3				ISSUE
SHEET No. 1 OF 1				1



ELECTRICAL		CONNECTIONS		
MAINS INPUT	100-240Vac 50-60Hz	PORT 1	WATER INLET	8MM (5/16") OUTSIDE TUBE DIAMETER
SYSTEM VOLTAGE	24Vdc	PORT 2	MANUAL BYPASS	8MM (5/16") OUTSIDE TUBE DIAMETER
POWER CONSUMPTION CHORUS 1, 2, 3 (PEAK)	60VA (PER MODULE)	PORT 3	DRAIN OUTLET	8MM (5/16") OUTSIDE TUBE DIAMETER
		PORT 4	PURIFIED WATER OUTLET	8MM (5/16") OUTSIDE TUBE DIAMETER
POWER CONSUMPTION HALO DISPENSER (PEAK)	20VA (PER MODULE)	PORT 5	RETURN WATER	8MM (5/16") OUTSIDE TUBE DIAMETER
		PORT 6	ELECTRICAL POWER INLET	ELECTRICAL CONNECTIONS. ONLY USE ELGA APPROVED POWER AND NETWORK LEADS.
WEIGHT		PORT 7	NETWORK CONNECTION	
CHORUS 1, 2, 3	34Kg (74Lb)	PORT 8	ELECTRICAL POWER LINK	
HALO DISPENSER	4Kg (9Lb)	PORT 9	NETWORK CONNECTION	
CHORUS AND HALO INTEGRATED	38Kg (84Lb)	PORT 10	FOOTSWITCH CONNECTION	6.35mm (1/4") JACK SOCKET
		PORT 11	BUILDING MANAGEMENT OUTPUT	6.35mm (1/4") JACK SOCKET

THIS DRAWING IS THE PROPERTY OF ELGA LabWater. THE DETAILS SHOWN ARE STRICTLY CONFIDENTIAL AND
MUST NOT BE DISCLOSED TO ANY THIRD PARTY WITHOUT THE CONSENT OF VWS (UK) LTD.